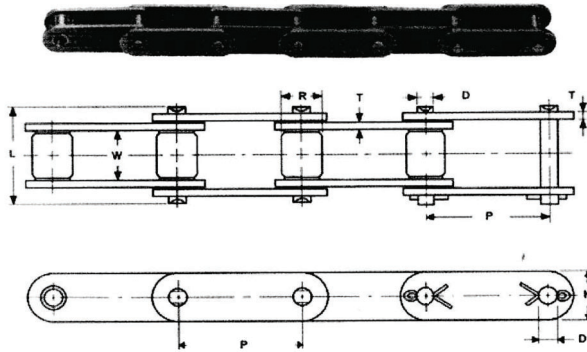
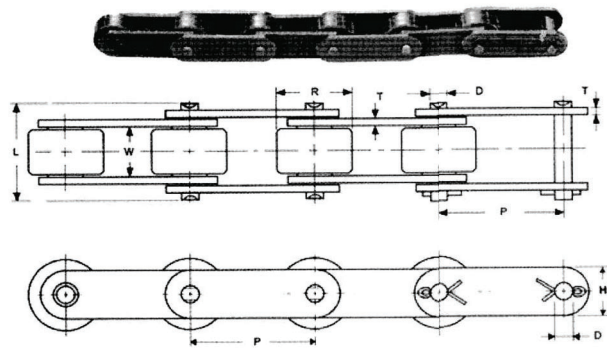


Double Pitch Conveyor Chains

Small Roller



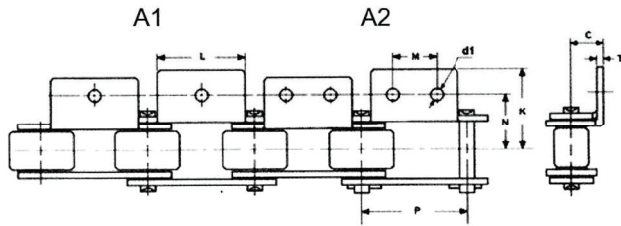
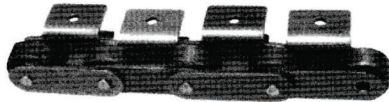
Large Roller



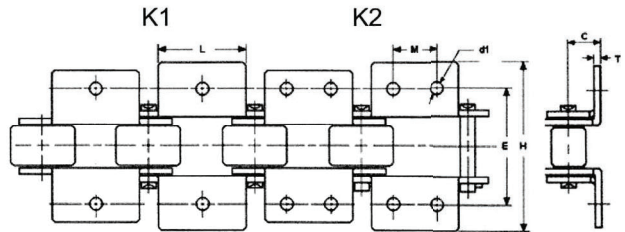
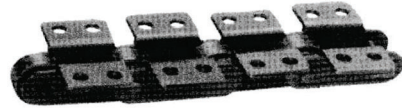
DIN/ISO Chain No.	ANSI Chain No.	Pitch	Roller Dia.	Inner Widht	Pin Dia	Pin Lenght	Plate		Ultimate Tensile Strength	Average Tensile Strength	Average Weight
							H	T			
		P	R	W	D	L	H	T	kN/LB	kN	Kg/m
C208A	C2040	25.4	7.95	7.85	3.96	16.6	12.0	1.50	14.1/3205	16.7	0.50
C208AL	C2042		15.88								0.84
C208AH	C2040H	25.4	7.95	7.85	3.96	18.8	11.8	1.60	14.1/3205	17.2	0.65
C208B			8.51								0.55
C208BL		25.4	15.88	7.75	4.45	16.7	11.8	1.60	18.0/4091	19.4	0.89
C210A	C2050		10.16	9.40	5.08	20.7	15.0	2.03	22.2/5045	2.81	0.78
C210AL	C2052		19.05								1.27
C212A	C2060		11.91	12.57	5.94	25.9	18.0	2.42	31.8/7227	36.8	1.12
C212AL	C2062	38.10	22.23								1.61
C212AH	C2060H		11.91	12.57	5.94	29.2	18.0	3.25	31.8/7227	41.6	1.44
C212AHL	C2062H	38.10	22.23								2.07
C216A	C2080		15.88	15.75	7.92	32.7	24.0	3.25	56.7/12886	65.7	2.08
C216AL	C2082	50.80	28.58								3.12
C216AH	C2080H		15.88	15.75	7.92	36.2	24.0	4.00	56.7/12886	70.0	2.54
C216AHL	C2082H	50.80	28.58								3.58
C220A	C2100		19.05	18.90	9.53	40.4	30.0	4.00	88.5/20114	102.6	3.01
C220AL	C2102	63.50	39.67								4.83
C220AH	C2100H		19.05	18.90	9.53	43.6	30.0	4.80	88.5/20114	112.4	3.56
C220AHL	C2102H	63.50	39.67								5.38
C224A	C2120		22.23	25.22	11.10	50.3	35.7	4.80	127.0/28864	147.3	4.66
C224AL	C2122	76.20	44.45								7.66
C224AH	C2120H		22.23	25.22	11.10	53.5	35.7	5.60	127.0/28864	160.9	5.26
C224AHL	C2122H	76.20	44.45								8.26
C232A	C2160		28.58	31.75	14.27	64.8	47.8	6.40	226.8/51545	278.9	8.15
C232AL	C2162	101.60	57.15								13.00
C232AH	C2160H		28.58	31.75	14.27	68.2	47.8	6.40	226.8/51545	285.8	9.06
C232AHL	C2162H	101.60	57.15								12.77

Double Pitch Conveyor Chain Attachments

A1 attachment



K 2 attachment



DIN/ISO Chain No.	ANSI Chain No.	P	L	M	N	K	C	d1
C208A	C2040	25.4	19.1	9.5	12.7	19.8	9.1	3.4
C208AL	C2042							
C208B		25.4	23.2	12.7	12.7	19.8	9.1	4.5
C208BL								
C210A	C2050	31.75	23.8	11.9	15.9	24.5	11.1	5.5
C210AL	C2052							
C212A	C2060	38.1	28.6	14.3	21.45	33.9	14.7	5.5
C212AL	C2062							
C212AH	C2060H	38.1	28.6	14.3	21.45	33.9	14.7	5.5
C212AHL	C2062H							
C216A	C2080	50.8	38.1	19.1	27.8	43.9	19.1	6.8
C216AL	C2082							
C216AH	C2080H	50.8	38.1	19.1	27.8	43.9	19.1	6.8
C216AHL	C2082H							
C220A	C2100	63.5	47.6	23.8	33.3	53.75	23.4	9.2
C220AL	C2102							
C220AH	C2100H	63.5	47.6	23.8	33.3	53.75	23.4	9.2
C220AHL	C2102H							
C224A	C2120	76.2	57.2	28.6	39.65	60.7	27.8	11.0
C224AL	C2122							
C224AH	C2120H	76.2	57.2	28.6	39.65	60.7	27.8	11.0
C224AHL	C2122H							
C232A	C2160	101.6	76.2	38.1	52.35	75.8	36.5	13.1
C232AL	C2162							
C232AH	C2160H	101.6	76.2	38.1	52.35	75.8	36.5	13.1
C232AHL	C2162H							

Double Pitch Conveyor Chain Attachments

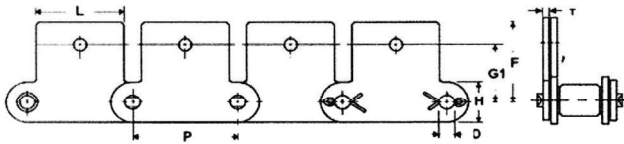
SK 1 attachment



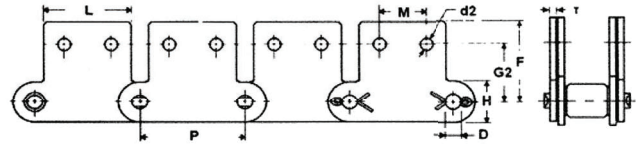
SK 2 attachment



SK 1



SK 2



DIN/ISO Chain No.	ANSI Chain No.	P	K	M	G1	G2	F	d1	d2	Additional Weight (kg/pc)	
										SA1/SA2	SK1/SK2
C208A	C2040	25.4	19.1	9.5	11.1	13.5	20.5	5.5	3.4	0.003	0.006
C208AL	C2042		19.1	9.5	11.1	13.5	20.5	5.5	3.4	0.003	0.006
C208B		25.4	23.2	12.7	11.1	13.5	20.5	5.5	4.5		
C208BL			23.2	12.7	11.1	13.5	20.5	5.5	4.5		
C210A	C2050	31.75	23.8	11.9	14.3	15.9	25.0	6.6	5.5	0.007	0.014
C210AL	C2052		23.8	11.9	14.3	15.9	25.0	6.6	5.5	0.007	0.014
C212A	C2060	38.1	28.6	14.3	17.5	19.1	32.9	9.2	5.5	0.017	0.034
C212AL	C2062		28.6	14.3	17.5	19.1	32.9	9.2	5.5	0.017	0.034
C212AH	C2060H	38.1	28.6	14.3	17.5	19.1	32.9	9.2	5.5		
C212AHL	C2062H		28.6	14.3	17.5	19.1	32.9	9.2	5.5		
C216A	C2080	50.8	38.1	19.1	22.2	25.4	43.5	11.0	6.6	0.036	0.072
C216AL	C2082		38.1	19.1	22.2	25.4	43.5	11.0	6.6	0.036	0.072
C216AH	C2080H	50.8	38.1	19.1	22.2	25.4	43.5	11.0	6.6		
C216AHL	C2082H		38.1	19.1	22.2	25.4	43.5	11.0	6.6		
C220A	C2100	63.5	47.6	23.8	28.6	31.8	50.4	13.0	8.4	0.066	0.132
C220AL	C2102		47.6	23.8	28.6	31.8	50.4	13.0	8.4	0.066	0.132
C220AH	C2100H	63.5	47.6	23.8	28.6	31.8	50.4	13.0	8.4		
C220AHL	C2102H		47.6	23.8	28.6	31.8	50.4	13.0	8.4		