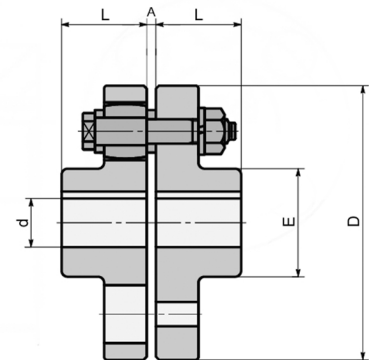
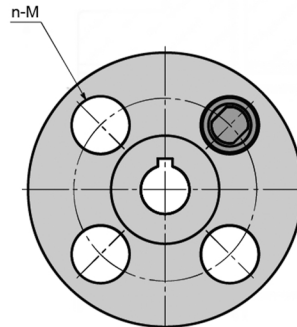
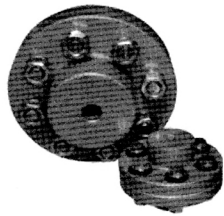
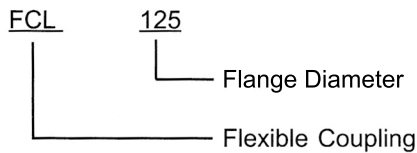


FCL Flexible Couplings



Type & Expressions



Rexton Flexible Flanged Shaft Couplings are robust, fail-safe pin and bush couplings engineered to deliver smooth torque transmission while damping vibration and compensating for shaft misalignment. Compact in design yet highly durable, they ensure reliable performance under continuous operation with minimal maintenance. Easy to install and operate, These couplings are ideally suited for high-speed, medium-to-light duty applications such as motors, pumps, compressors, hoists, spinning machines, and ball mills, making them a dependable choice across diverse industries.

Size chart & Parameter

Type	Max Torque (Nm)	Max Bore (mm)	Max Speed (r/min)	D	E	d	L	A	n-M	Weight (kg)	Recommended Motor Power (kW)	
FCL 90	4	20	4000	90	35.5	11	28	3	4-M8X50	1.7	2 Pole	4 Pole
FCL 100	10	25	4000	100	40	11	35.5	3	4-M10X56	2.3	0.75	0.37
FCL 112	16	28	4000	112	45	13	40	3	4-M10X56	2.8	1.5	1.1
FCL 125	25	28	4000	125	50	13	45	3	4-M12X64	4.0	4.0	2.2
FCL 140	50	35	4000	140	63	13	50	3	6-M12X64	5.4	4.0	3.0
FCL 160	110	45	4000	160	80	15	56	3	8-M12X64	8.0	7.5	5.5
FCL 180	157	50	3500	180	90	15	63	3	8-M12X64	10.5	18.5	15
FCL 200	245	56	3200	200	100	21	71	4	8-M20X85	16.2	22	22
FCL 224	392	63	2850	224	112	21	80	4	8-M20X85	21.3	45	30
FCL 250	618	71	2550	250	125	25	90	4	8-M24X110	31.6	55	45
FCL 280	980	80	2300	280	140	34	100	4	8-M24X116	44.0		55
FCL 315	1568	90	2050	315	160	41	112	4	10-M24X116	57.7		132
FCL 355	2450	100	1800	355	180	60	125	5	8-M30X50	89.5		200
FCL 400	3920	110	1600	400	200	60	125	5	10-M30X150	113		355
FCL 450	6174	125	1400	450	224	65	140	5	12-M30X150	145		560
FCL 560	9800	140	1150	560	250	85	160	5	14-M30X150	229		900
FCL 630	15680	160	1000	630	280	95	180	5	18-M30X150	296		